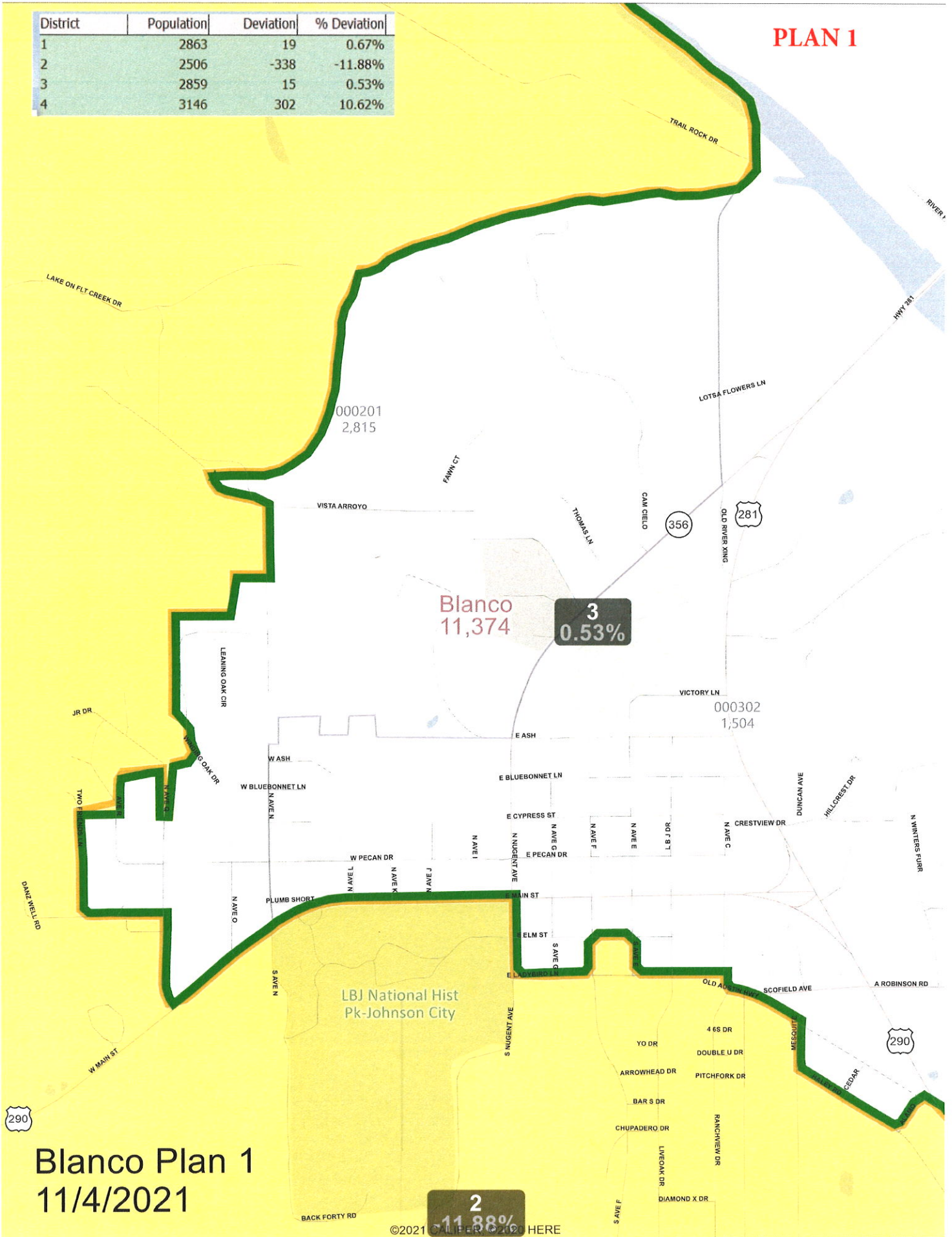


PLAN 1

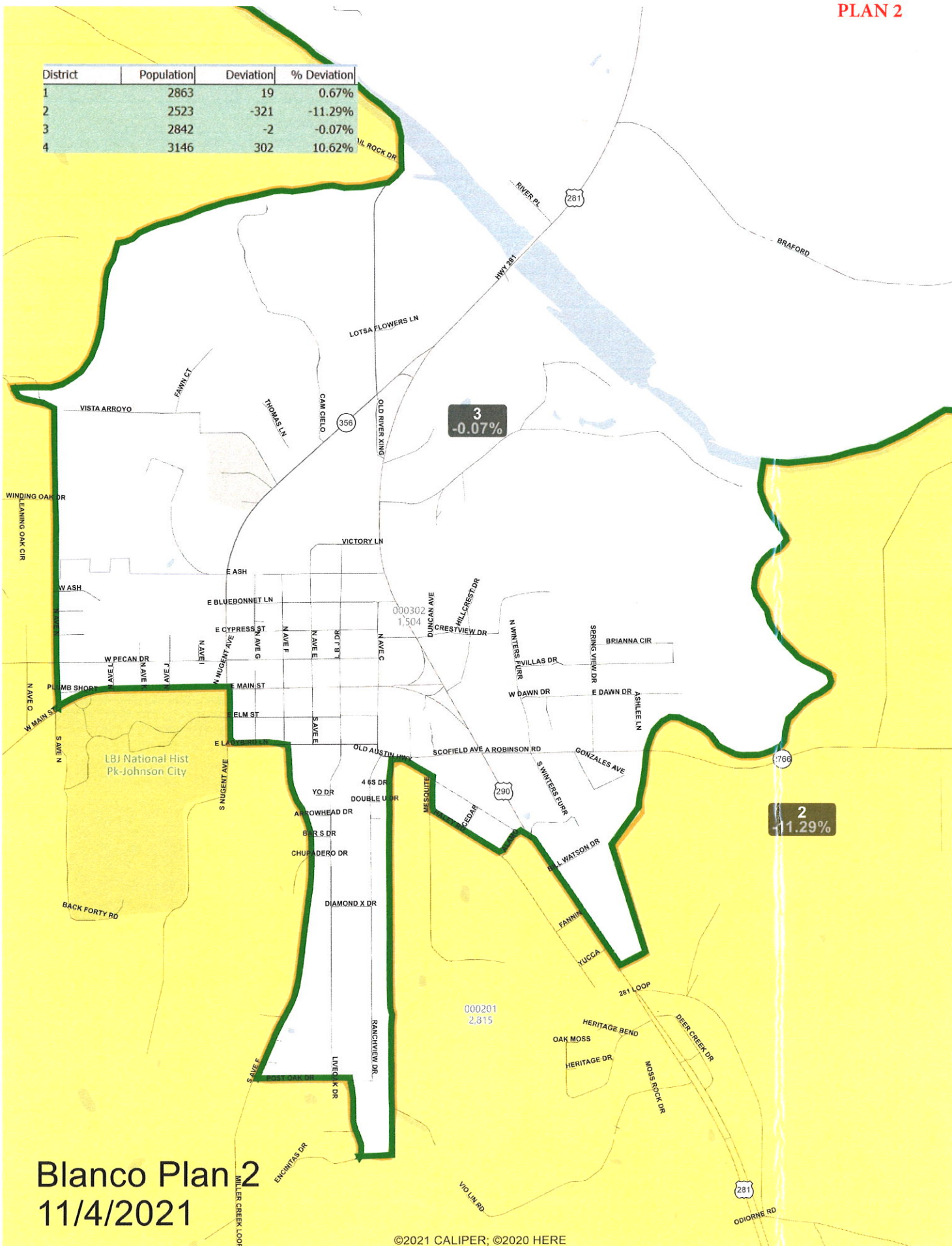
District	Population	Deviation	% Deviation
1	2863	19	0.67%
2	2506	-338	-11.88%
3	2859	15	0.53%
4	3146	302	10.62%



Blanco Plan 1
11/4/2021

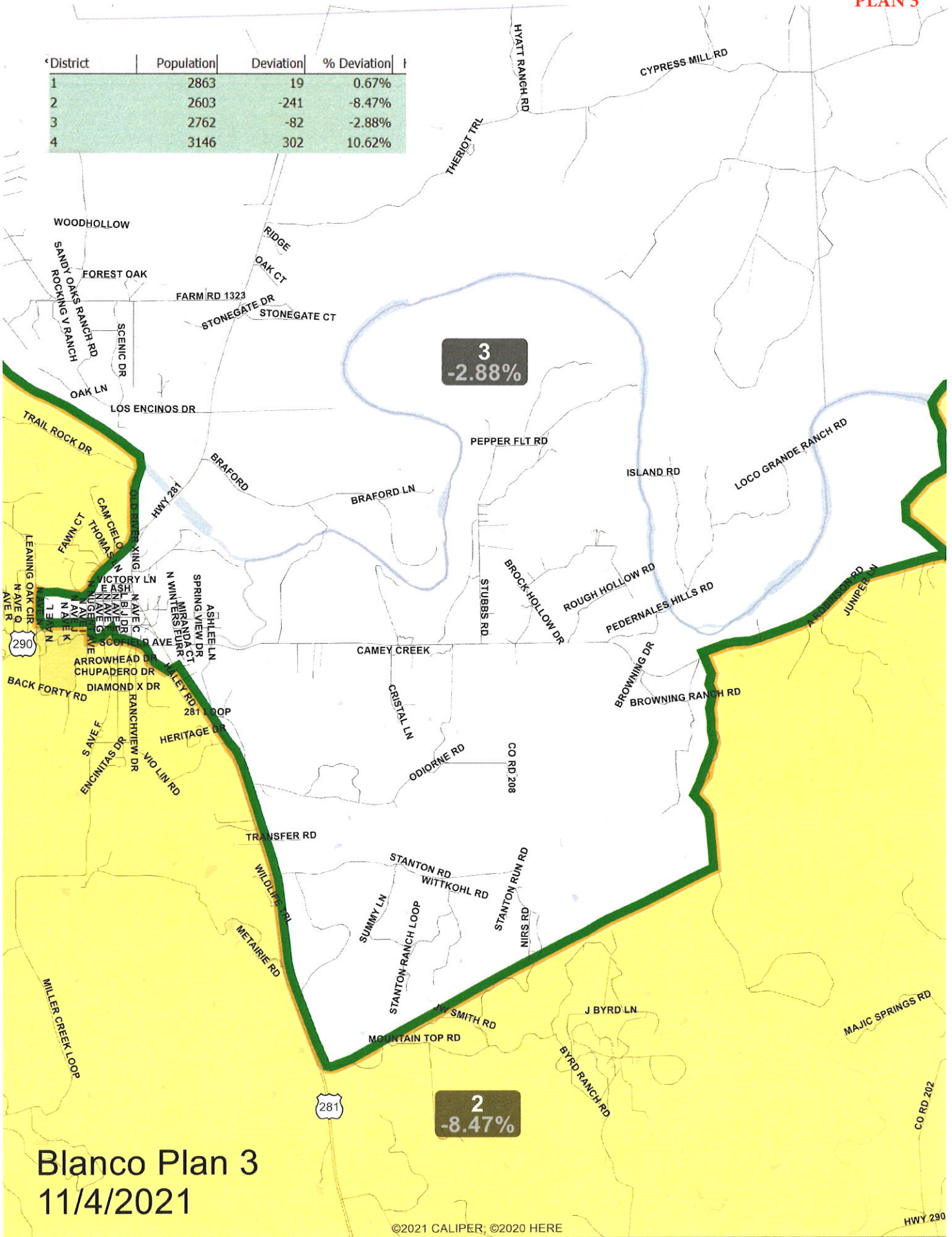
2
11.88%

District	Population	Deviation	% Deviation
1	2863	19	0.67%
2	2523	-321	-11.29%
3	2842	-2	-0.07%
4	3146	302	10.62%



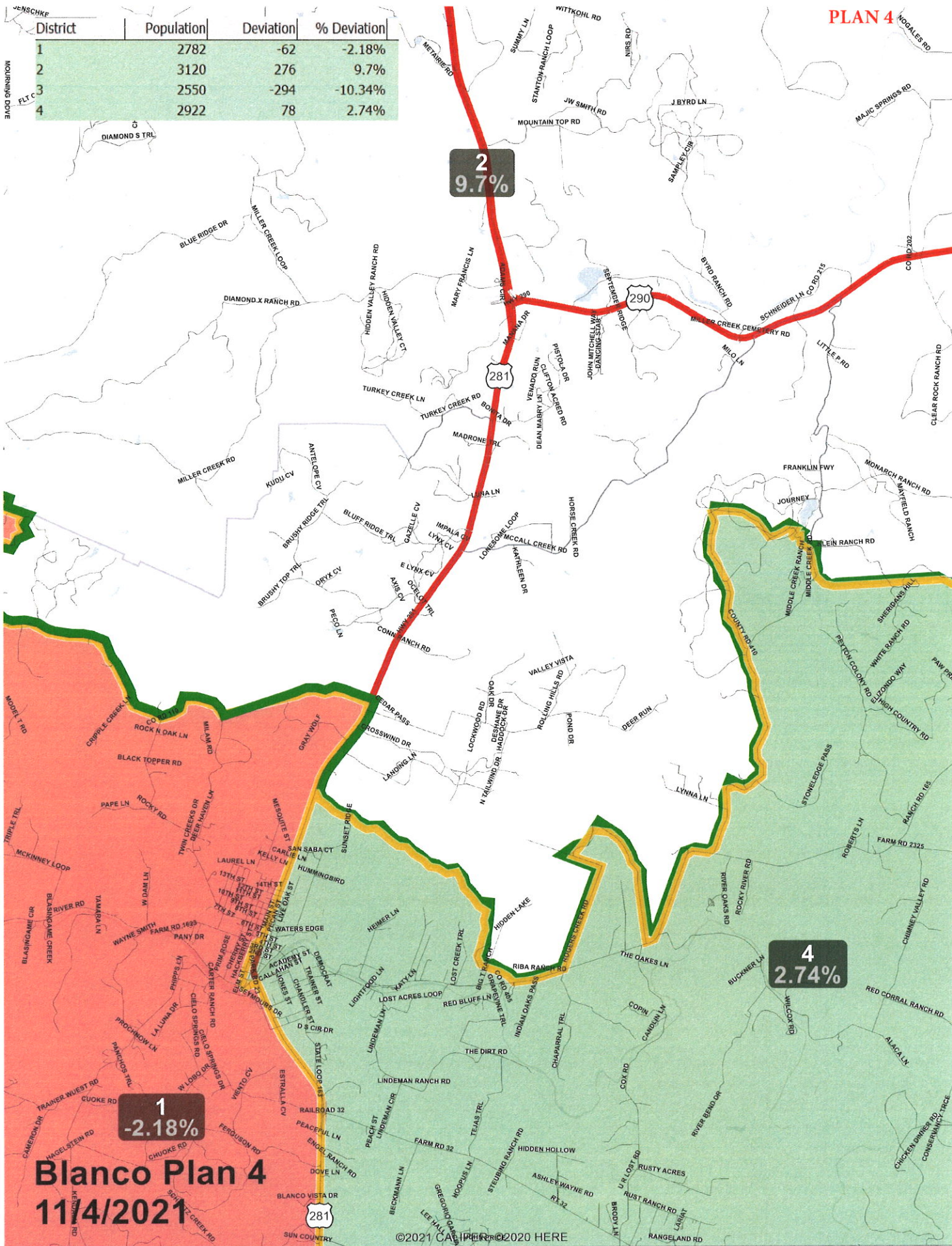
Blanco Plan 2
11/4/2021

District	Population	Deviation	% Deviation
1	2863	19	0.67%
2	2603	-241	-8.47%
3	2762	-82	-2.88%
4	3146	302	10.62%



Blanco Plan 3
11/4/2021

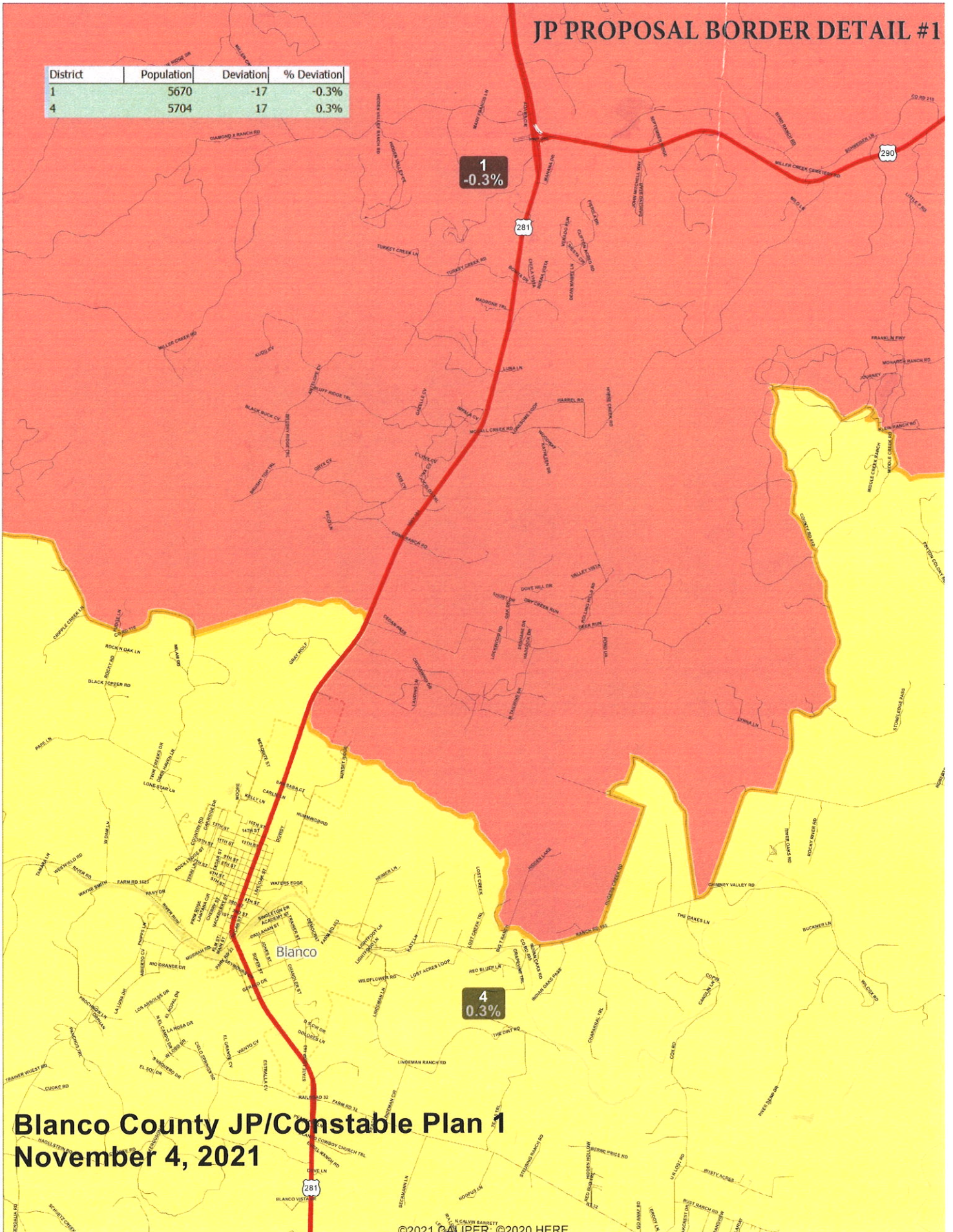
District	Population	Deviation	% Deviation
1	2782	-62	-2.18%
2	3120	276	9.7%
3	2550	-294	-10.34%
4	2922	78	2.74%



Blanco Plan 4
11/4/2021

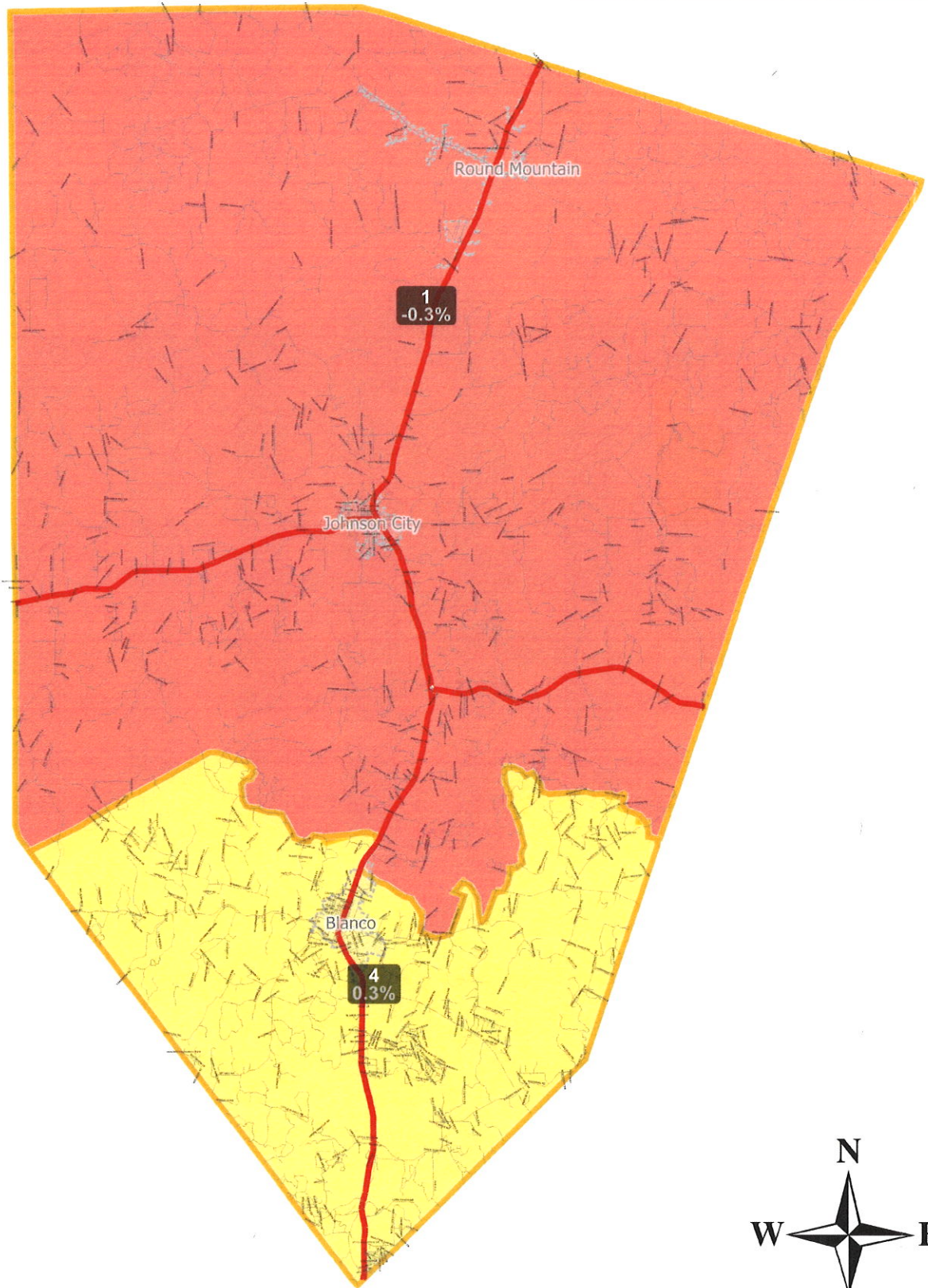
JP PROPOSAL BORDER DETAIL #1

District	Population	Deviation	% Deviation
1	5670	-17	-0.3%
4	5704	17	0.3%



Blanco County JP/Constable Plan 1
November 4, 2021

District	Population	Deviation	% Deviation
1	5670	-17	-0.3%
4	5704	17	0.3%



**Blanco County JP/Constable Plan 1
November 4, 2021**